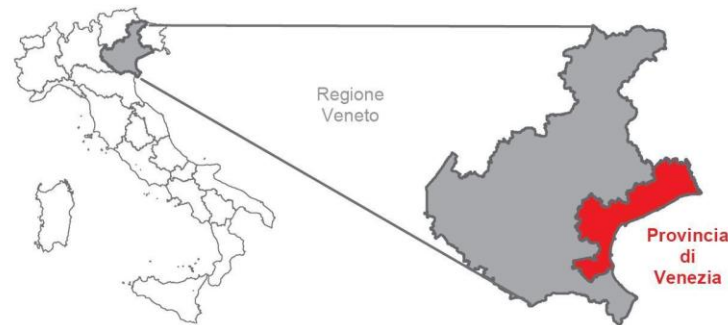


WATER PLANS

A case study of governance at local level



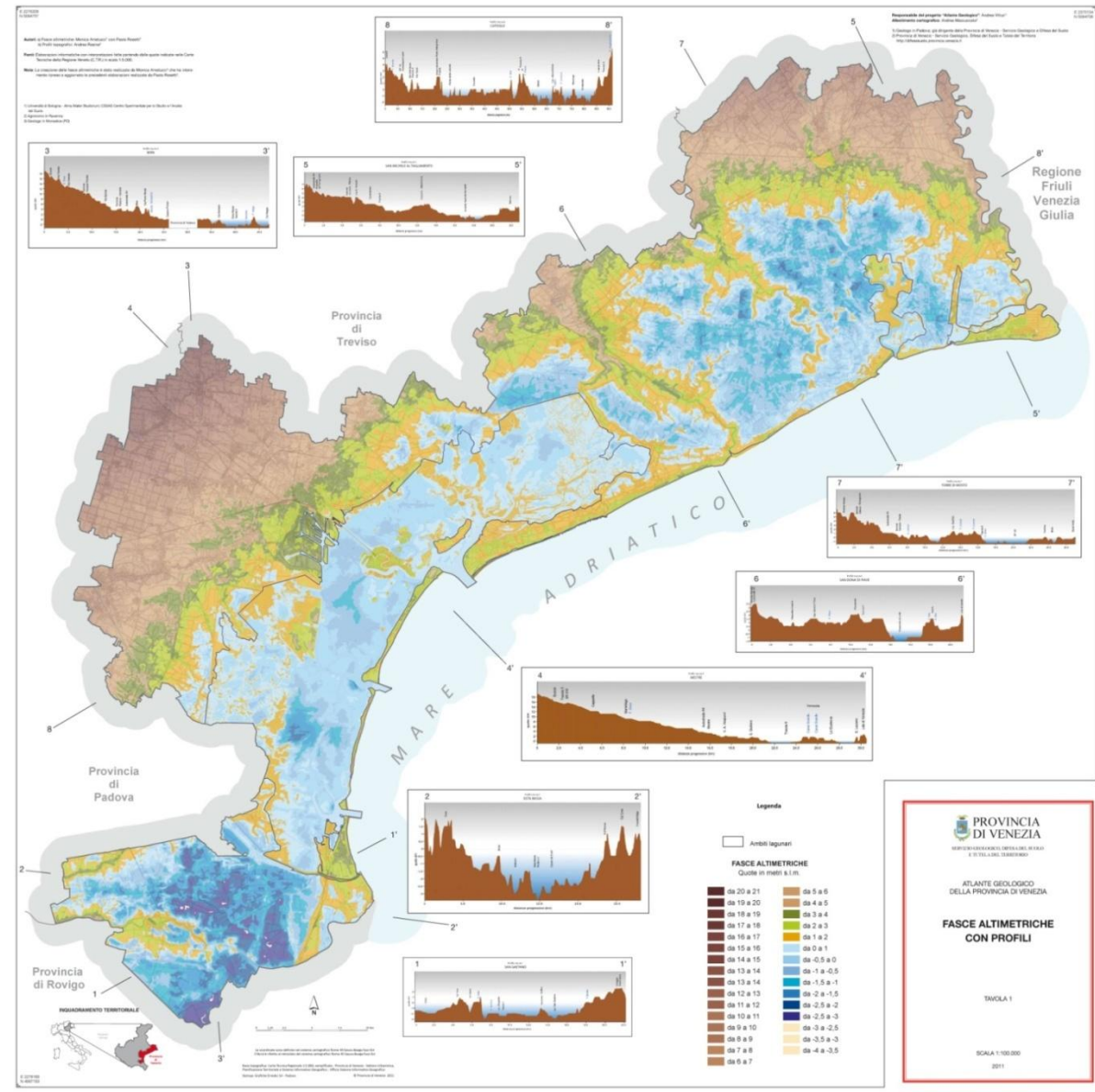
Massimo Gattolin

Director for Soil Protection and Territory Safeguard

Province of Venice

MICRORELIEF MAP

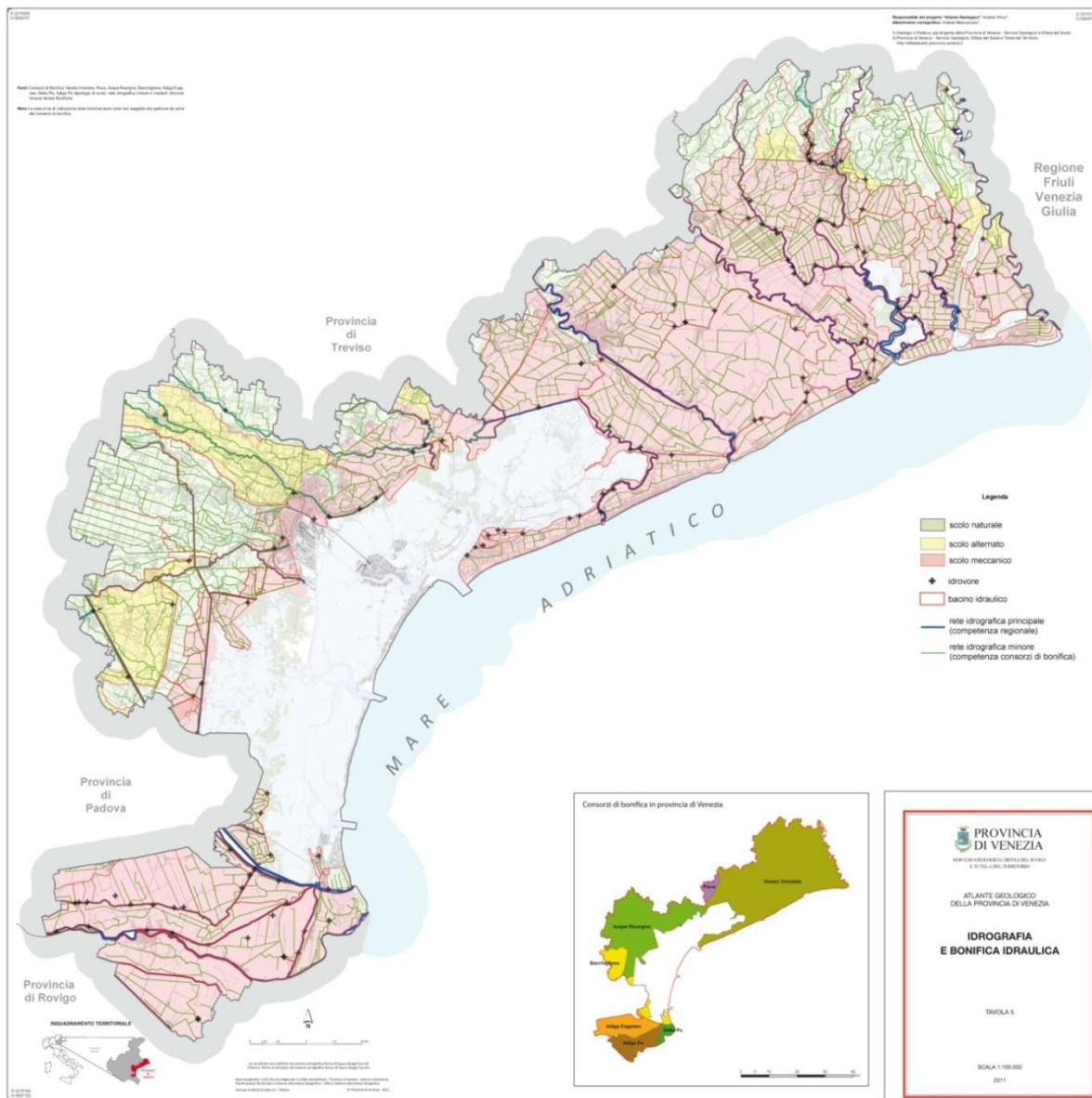
The province territory is a basin with a lot of part under sea level (blue color). Only the lagoon is really submerged. The other part of territory under the sea level area has been reclaimed



PROVINCIA DI VENEZIA
 Servizio Difesa del Suolo e Tutela del Territorio
 Service for Soil Protection and Territory Safeguard

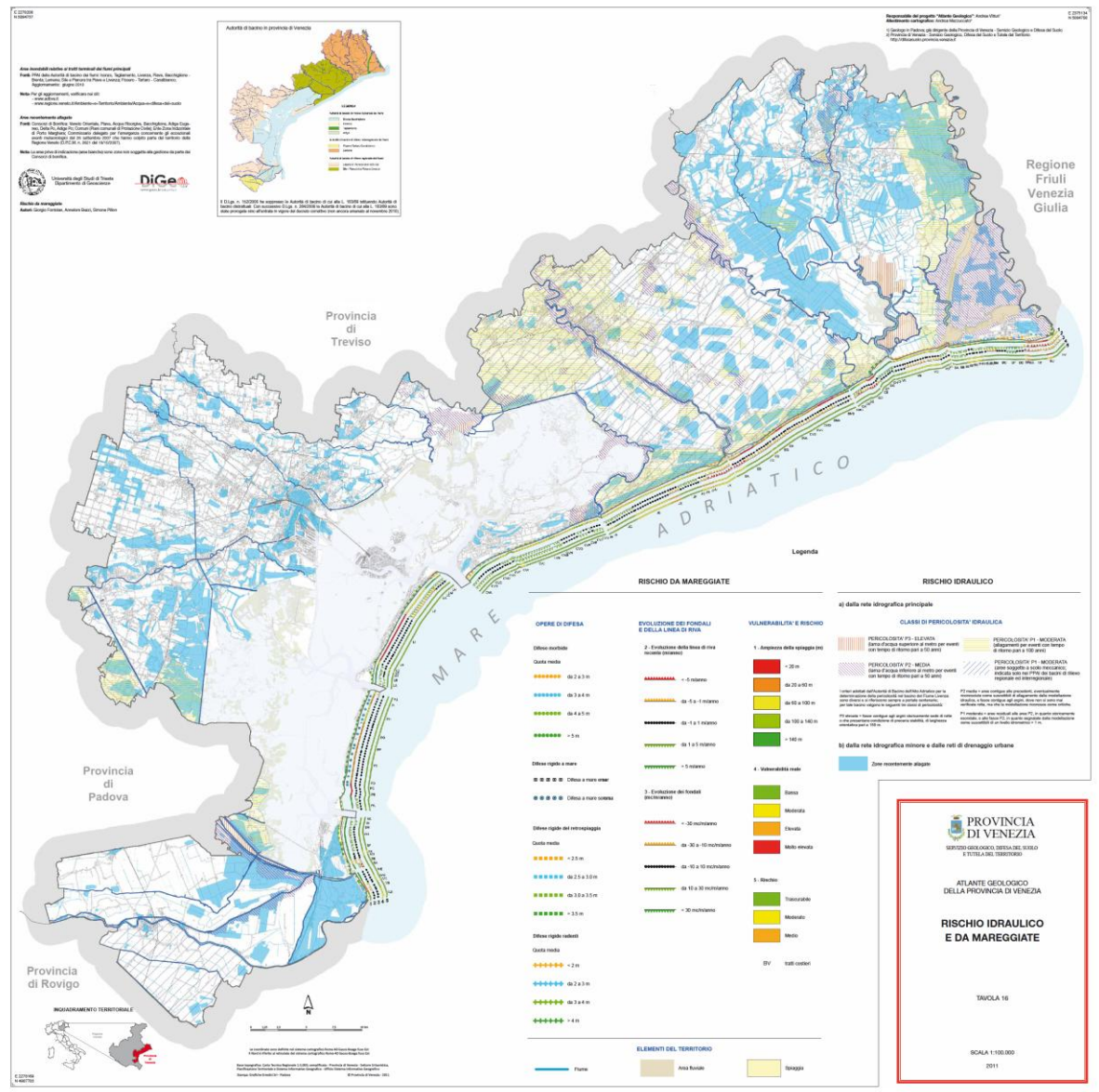
HYDROGRAPHIC NETWORK AND LAND RECLAMATION MAP

- Mechanical drainage: red area
- Natural drainage: green area
- Alternate drainage: yellow area
- Rivers: blu lines
- Minor hydraulic network: green lines



Hydraulic risk

Fluvial system – by major rivers
Minor hydraulic network
risk of storm surges





NATURAL FACTORS

extreme weather events in a short time



ANTHROPOGENIC FACTORS

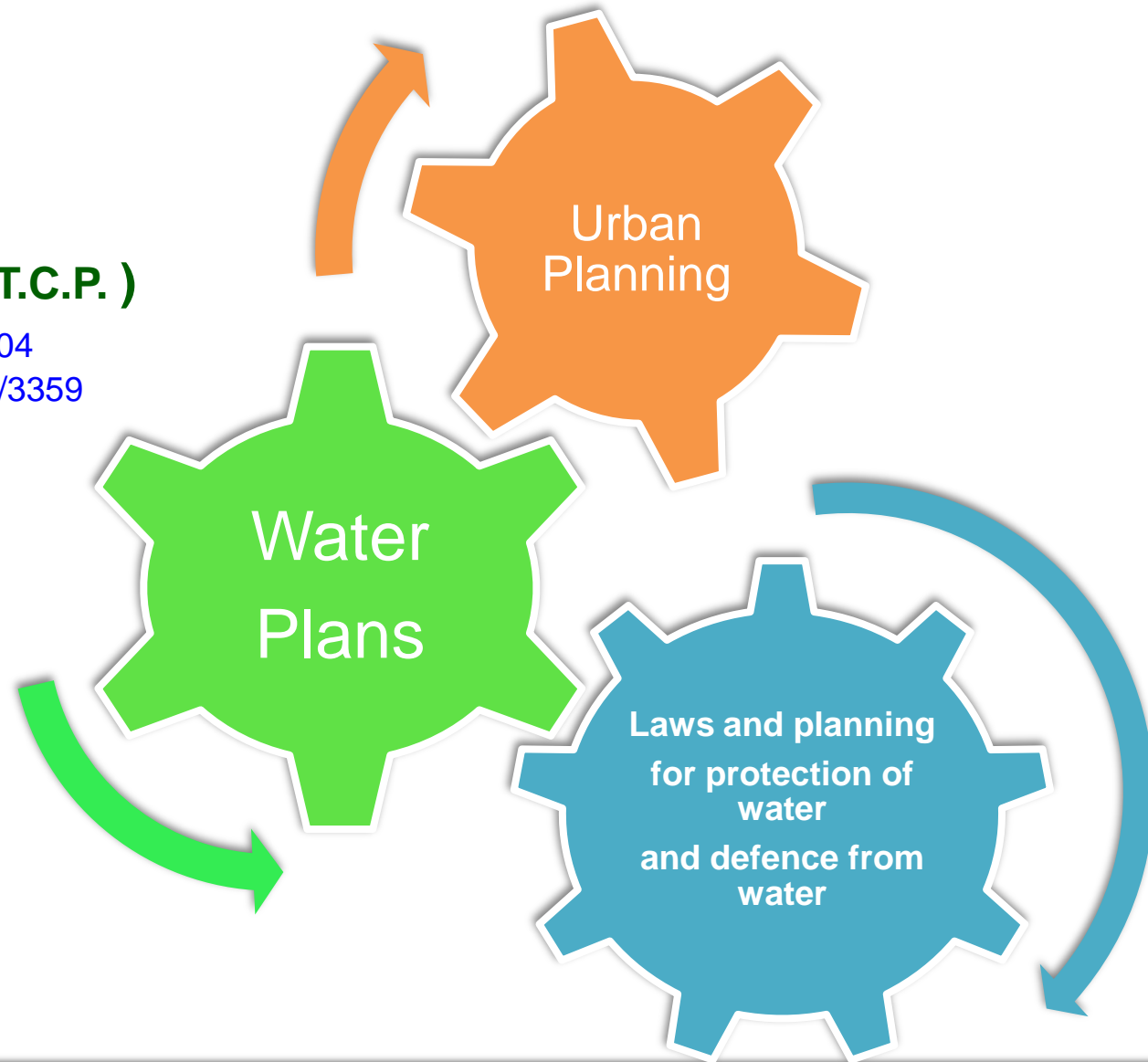
Consumption of agricultural land

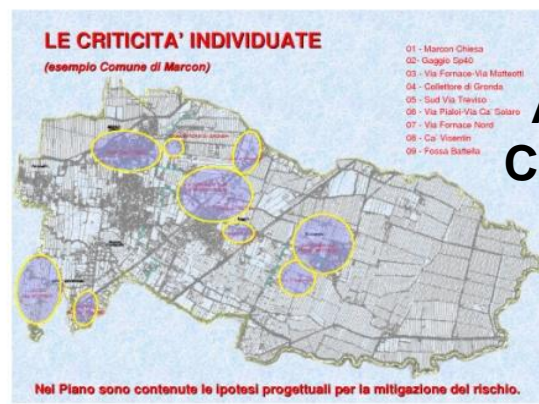
**These factors make inadequate
network of collection and disposal of stormwater**

Territorial planning of Province of Venice (P.T.C.P.)

adopted by D.G.P. No. 2008/104
approved by the Region No. 2010/3359

Technical Standards
at Art. 15: Hydraulic risk
Introduce
the Directive
"WATER PLANS"
as
element of conjunction





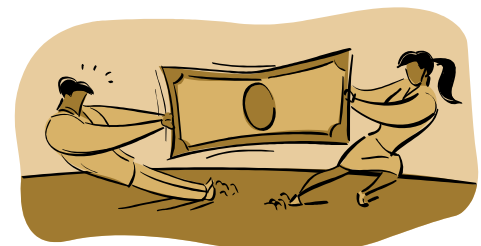
ANALYSIS OF LAND, CRITICAL HYDRAULIC AND SOLUTIONS



COMPETENCE NETWORK

WATER PLANNING

a operational, dynamic tool useful at local scale



QUANTIFICATION OF THE RESOURCES

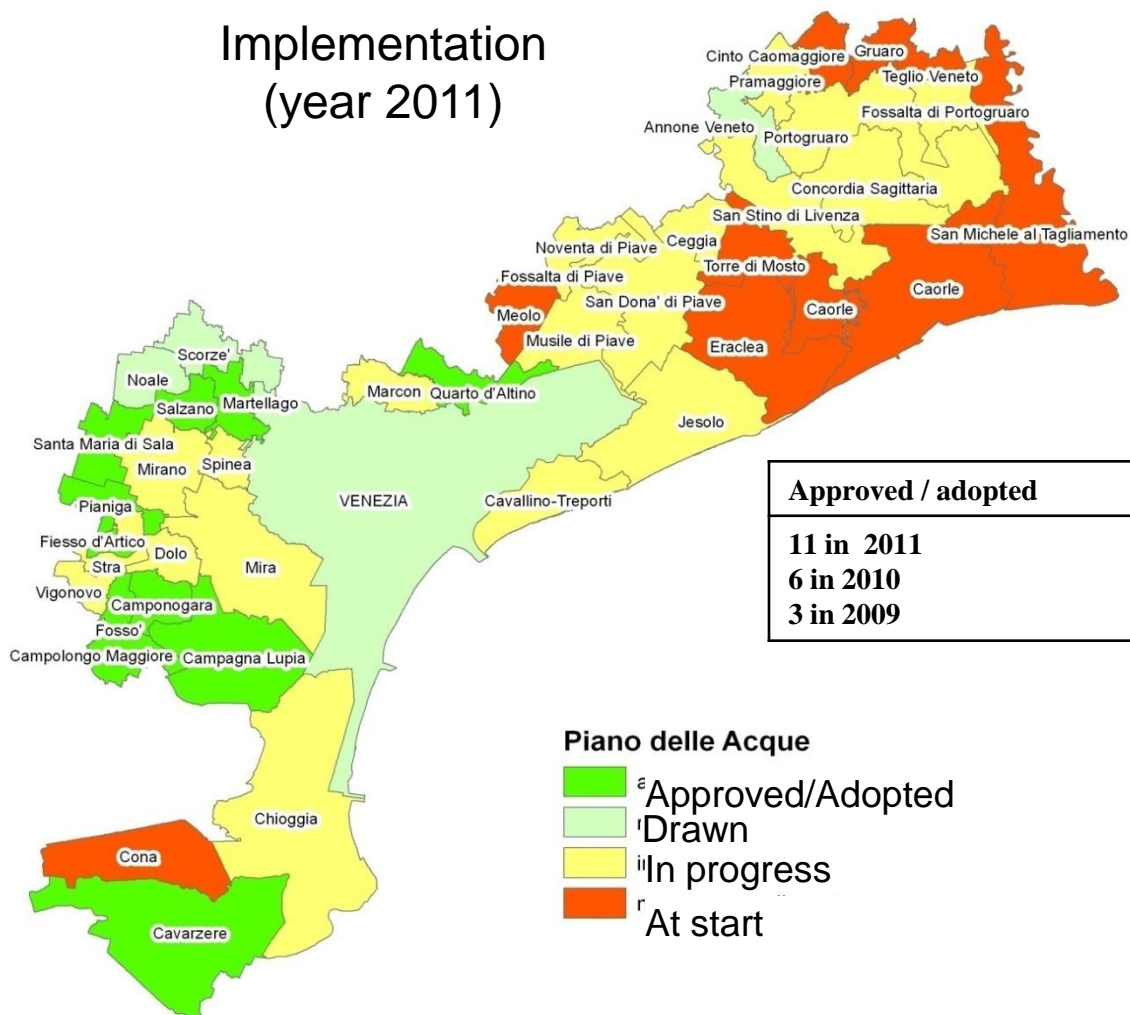


PRIORITY SCHEDULING OF MAINTENANCE



GUIDELINES

Implementation (year 2011)

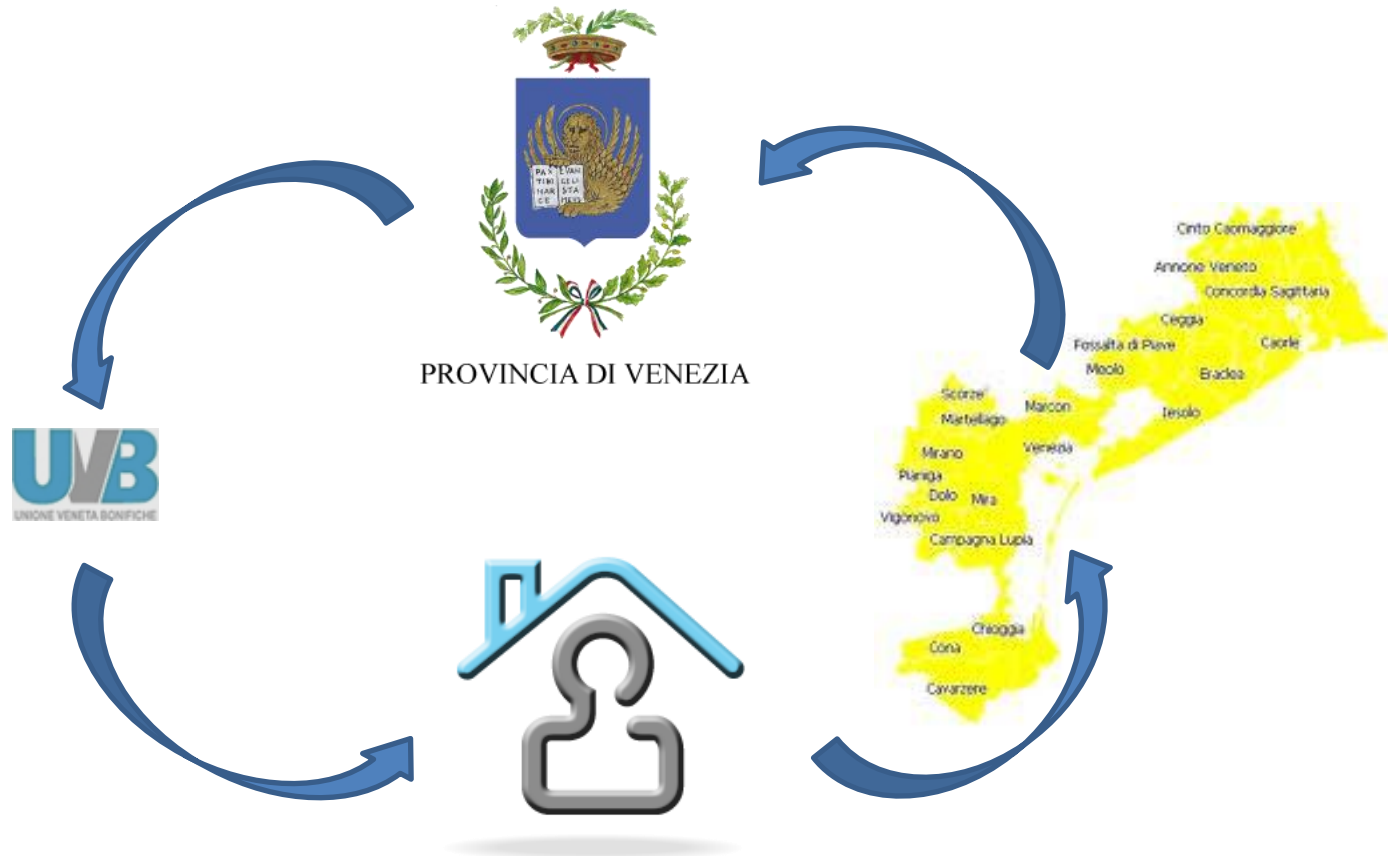


Approved / adopted	drawn	In progress	At start
11 in 2011	4 in 2011	20 in 2011	9 in 2011
6 in 2010	4 in 2010	23 in 2010	11 in 2010
3 in 2009	3 in 2009	14 in 2009	13 in 2009

Piano delle Acque

- Approved/Adopted
- Drawn
- In progress
- At start

coordination and support



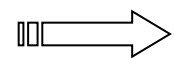
Database of scheduled interventions by all the Water Plans




PROVINCIA DI VENEZIA
 Servizio Difesa del Suolo e Tutela del Territorio
 UFFICIO GEOLOGIA

BANCA DATI DEGLI INTERVENTI IDRAULICI

Aggiornato al 28/09/2011





PROVINCIA DI VENEZIA
 Servizio Difesa del Suolo e Tutela del Territorio
 UFFICIO GEOLOGIA

Scheda intervento
224

Fase di realizzazione: _____

Intervento: Sistemazione di un vecchio ponte in via Magliera (Ligo SP 18)

oggetto dell'intervento: Sistemazione di un vecchio ponte in via Magliera a Leghetto di Campagna Lupia la cui volta è stata dirottata e sostituita da un ponte a cassone, a causa del forte inabito. Si rende necessaria la sostituzione del ponte con il nuovo cassone di maggiori dimensioni.

soggetto competente: Comune di Campagna Lupia

soggetto realizzatore: Comune di Campagna Lupia

costo: € 40.000,00

risorse disponibili: _____

comuni interessati dall'intervento: CAMPAGNA LUPIA (VE)

Si ritiene opportuna o necessaria l'approvazione del progetto definitivo da parte del commissario a seguito di una conferenza di servizi da indire ex art. 2, comma 2

relazione esplicita: Adottato il Piano delle Acque

note: FINANZIABILE

Esaminato in Conferenza di Servizi in data: _____

Oggetto della Conferenza di Servizi: _____


Decreto di Approvazione: _____

Decreto di Impegno Spesa: _____

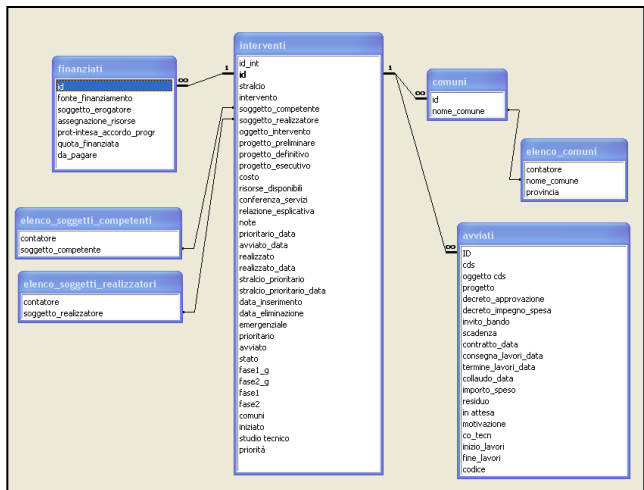
Contratto in data: _____

Consegna lavori in data: _____

Termine lavori in data: _____



mercoledì 28 settembre 2011 Pagina 1 di 1



Database structure

Thank you for your attention

www.difesasuolo.provincia.venezia.it